

Makahiki o Nā Manu Nahele

Year of the Forest Birds



Nā Manu Nahele ORIGAMI PROJECT

We invite you to create forest bird origami! Celebrate our forest birds this year and see your creations publicly displayed on each island (on Kaua'i, they will be at the KSA gallery at Kukui Grove Center from Nov 2-8) and then again on O'ahu (location tbd) representing bird species and artists from across the state.



scan me:



How to participate:

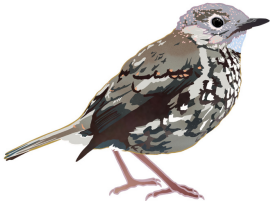
- 1). Check out our website hub (dlnr.hawaii.gov/dofaw/manu) for information and inspiration and create your origami forest birds.
- 2). Drop off or send the finished origami birds to the Kaua'i Forest Bird Recovery Project at PO Box 27, Hanapēpē, HI 96716 (physical location: 3751 Hanapēpē Road in Hanapēpē) by Oct 25th. Only birds in the colors red, green, yellow, grey, brown, and black will be displayed.

Rules and Guidelines

1. Origami should be in flying position. Attach a minimum 24" white cotton thread or fishing line to the mid-point of the back of each bird.
2. Origami can be single-sheet (traditional), modular or composite. Coloring to make the origami bird look as close as possible to the natural bird's coloring is totally acceptable. Strict adherence to traditional origami techniques is not necessary.
3. We will be unable to return submissions.
4. Public display venues and dates for each island will be announced soon. Only origami representing native Hawaiian forest birds will be displayed. Our goal is to collect all island flocks for an all-island public display in Honolulu, before Christmas of 2024.

Kaua'i forest bird species (art by Kelly Vicars, not pictured PUEO):

kuaiforestbirds.org



puaiohi



'akeke'e



'i'iwi



Kaua'i 'amakihi



'anianiau



Kaua'i 'elepaio



'akikiki



'apapane